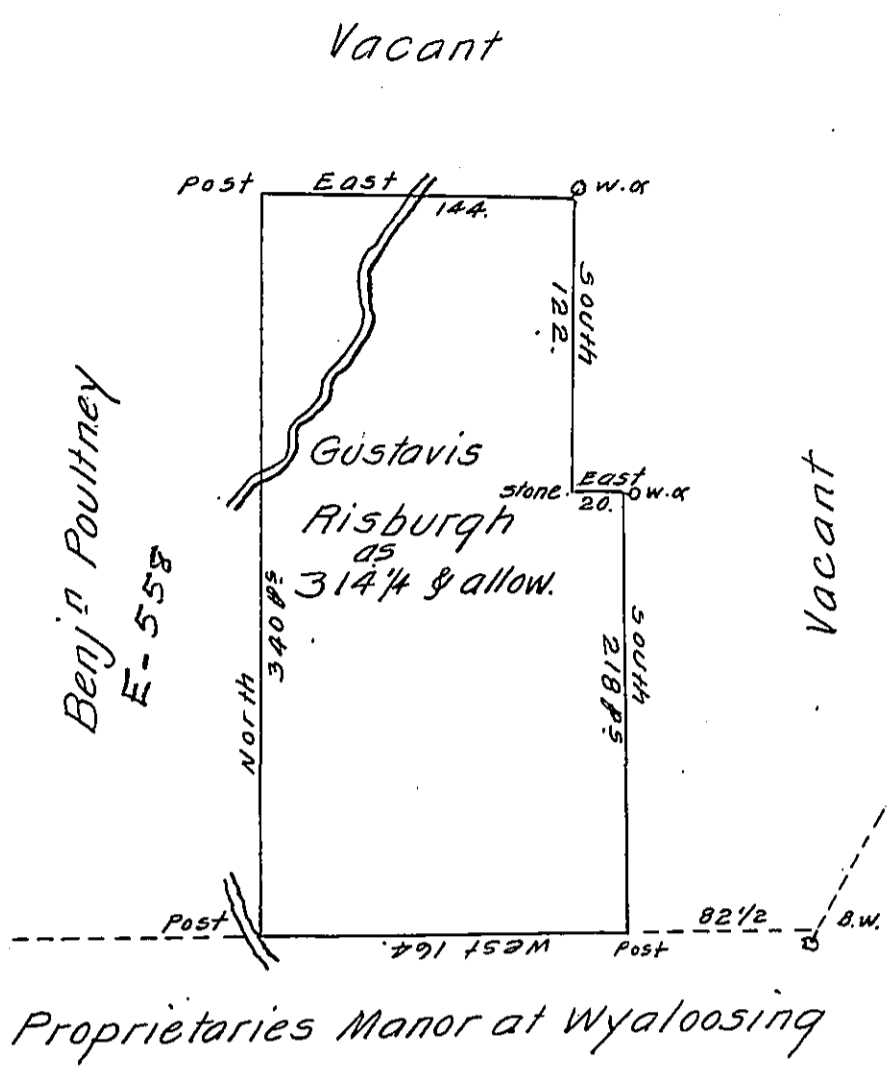


FORM No. 1.



A Draught of a Tract of Land called—situate (obl.) Side of the North East Branch of Susquehanna River adjoining the Proprietaries Manor at Wyalosing and lands of Benjamin Poultney in the County of Northumberland. Containing three hundred & fourteen Acres and a quarter of an Acre besides the usual allowance of Six Cent for Roads &c Surveyed the 5<sup>th</sup> day of June 1775 for Gustavis Risburgh In Pursuance of a Warrant Dated the 13<sup>th</sup> Day of October 1774.

by Cha<sup>s</sup> Stewart D. Sur<sup>t</sup>

To John Lukens Esq<sup>r</sup> Survey<sup>r</sup> Gen<sup>l</sup>

IN TESTIMONY that the above is a copy of the original remaining on file in the Department of Internal Affairs of Pennsylvania, made conformably to an Act of Assembly approved the 16th day of February, 1833, I have hereunto set my Hand and caused the Seal of said Department to be affixed at Harrisburg, this thirty first day of January 1911.

*Henry Howell*  
Secretary of Internal Affairs.